

Name, surname :

Class / Number :

1. Write the correct words under the pictures. (1 point each.)

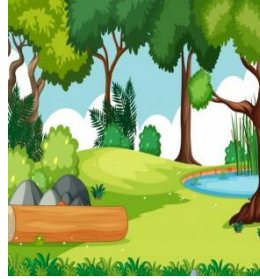
| | | | | | | |
|-----------|-------------|------------|----------|-----------|---------|-------------|
| A. Bird | B. Elephant | C. Jump | D. Teeth | E. Forest | F. Cut | G. Run fast |
| H. Desert | I. Reptile | J. Protect | K. Wing | L. People | M. Feed | N. Camel |



1-



2-



3-



4-



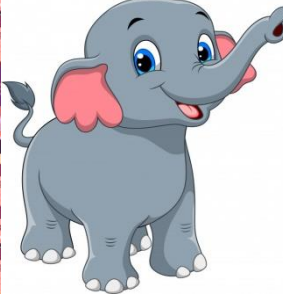
5-



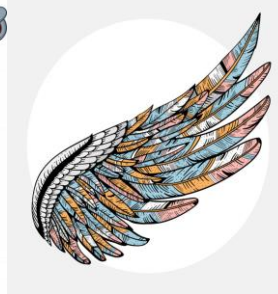
6-



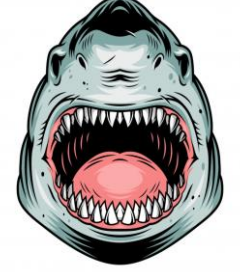
7-



8-



9-



10-



11-



12-



13-



14-

2. Match the sentences with their meanings. (1 point each.)

| | |
|--|---|
| 1. Some animals are poisonous. | A. Memeliler yavrularını sütle besler. |
| 2. Mammals feed their babies with milk. | B. Kafesler hayvanların yaşam alanı değildir. |
| 3. Hunters kill the animals for money and fun. Somebody needs to stop them now. | C. Eğer onları korumazsak bir sürü vahşi hayvanın soyu tükenecik. |
| 4. If we don't protect them, a lot of wild animals will become extinct. | D. İnsanlar hayvanları korumakla sorumludur, bu yüzden bir şeyler yapmalıyız. |
| 5. We can not live without animals. | E. Haydi vahşi yaşam için bir kampanya başlatalım. |
| 6. Cages aren't the habitats of animals. | F. Biz hayvanlar olmadan yaşayamayız. |
| 7. People are responsible for protecting the environment, so we should do something. | G. Avcılar hayvanları para ve eğlence için öldürüyor. Birileri onları hemen durdurmalı. |
| 8. Let's start a campaign for the wildlife. | H. Bazı hayvanlar zehirlidir. |

1 2 3 4 5 6 7 8

3. Put the sentences into correct places of conversation. (6 points each.)

A- Human beings. People.

B- I'm going to make some organizations on Twitter and Facebook.

C- We need to do something or it'll be too late.

D- This is better than killing all the people.

Pelin: Hey Pervin. Why are you crying? What happened to you?

Pervin: I watched a documentary yesterday and I feel upset every time I remember it.

Pelin: Really? I'm sorry for that. What is it about?

Pervin: Wildlife. It says, in next fifty years, %60 of wild animals will be extinct, and this will destroy the environment. 1- _____.

Pelin: Oh no!!! That is terrible. You are right. Who is responsible for the extinction of animals?

Pervin: Us. 2- _____. We are responsible for everything. Now, what should we do?

Pelin: Let's hunt all of the people in the world. If we can do that, there'll be no problems then.

Pervin: Haaa haaaa. Are you kidding? What about you? Me?

Pelin: Hmmm. What about starting a campaign on Instagram and get some support from famous people. We can be successful with their help in a short time, and everybody can hear us.

Pervin: Perfect. 3- _____. Let's find a hashtag.

Pelin: "Animalove" I think this is simple but interesting.

Pervin: Ohh my God. I love it. I can't believe that. You were talking about hunting people five minutes ago, and now you say amazing things.

Pelin: That is very kind of you. 4- _____, because more people use these social accounts than Instagram. Let's save the animals. If they live happily, we can live in peace, too. They have feelings and need us.

4. Write "B" for "Birds", "M" for "Mammals" and "R" for "Reptiles". (1 point each.)

1- Horses and rhinos.

7- Snakes and iguanas.

2- Penguins and ostriches.

8- Owls and parrots.

3- Tigers and lions.

9- Whales and dolphins.

4- Eagles and dodos.

10- Giraffes and camels.

5- Storks.

11- Kangaroos and elephants.

6- Bears and monkeys.

12- Crocodiles and turtles.

5. Match the words with the sentences. (3 points each.)

A- Extinct

B- Mammals

C- Herbivore

D- Crocodile

E- Shark

F- Giraffe

G- Horse

H- Polar bear

I- Educate

J- Protect

1- I live in water and have sharp teeth. I eat other smalls fish.

2- We need to save, feed and love animals. We should not harm them.

3- Some animals disappeared because of many reasons. They do not survive anymore.

4- I'm a reptile and I livie in both water and on land. Be careful! I'm dangerous.

5- Teachers should teach all of the people about the importance of wild animals.

6- Many animals eat leaves or grass. They never eat meat.

7- I'm a big animal and I live in cold places, but I'm in danger of becoming extinct.

8- People can go somewhere with me in a short time. I'm strong and carry heavy things.

9- I'm the tallest animal on earth. I'm friendly and herbivore.

10- We give birth and feed our babies with our milk.

6. Circle the correct words. (2 points each.)

A. "Wear fur - Hunt animals" / "Love animals - Protect the life" can be the best slogan for our campaign. I think it can save many lives of endangered species. Let's do it.

B. Elephants are **clever** / **dangerous** animals. They can keep the adresses of places in their memory for a long time and they can go to the same places after many years. They are smarter than us.

C. Gizem: What do you think about people - human beings?

Rümeysa: Bad things.

Gizem: What do you mean?

Rümeysa: People always destroy the environment and kill animals. We are **harmful** / **useful** for life.

D. All animals have **same** / **different** characterictics, so we need to be careful when we get close to them. Some may be friendly, but some may be dangerous.

E. Covid: What should we do to protect endangered animals?

Corona: We should **plant trees** / **pollute environment**.

F. Dodo birds and dinosaurs are **extinct** / **endangered** animals.

LET'S HAVE FUN

7. Guess the words and complete the puzzle.

1.

2.

3.

4.

5.

6.

7.

8.

| | | | | | | | |
|---|--|---|---|--|--|---|---|
| | | | | | | 4 | |
| | | | | | | | |
| | | 3 | | | | U | |
| | | | | | | | |
| | | | | | | | |
| | | | | | | | |
| | | 1 | K | | | | |
| 2 | | | | | | | R |

| | | | | | | | |
|--|--|---|---|---|--|---|--|
| | | | | | | 8 | |
| | | | | | | | |
| | | | | | | | |
| | | | | | | 5 | |
| | | 7 | S | | | | |
| | | | | | | | |
| | | | | | | | |
| | | | | | | | |
| | | | | | | | |
| | | 6 | | L | | | |

Instagram: ramazanceylan.elt

Facebook group for teachers: ramazanceylan.elt

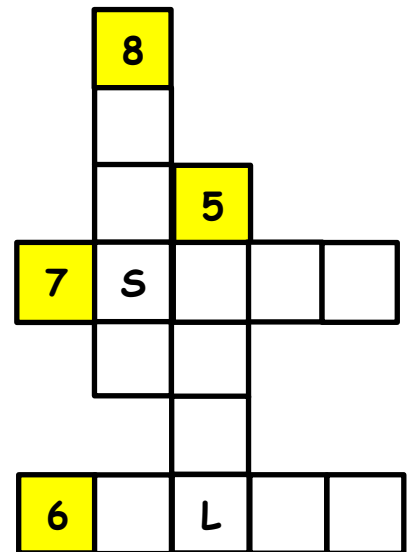
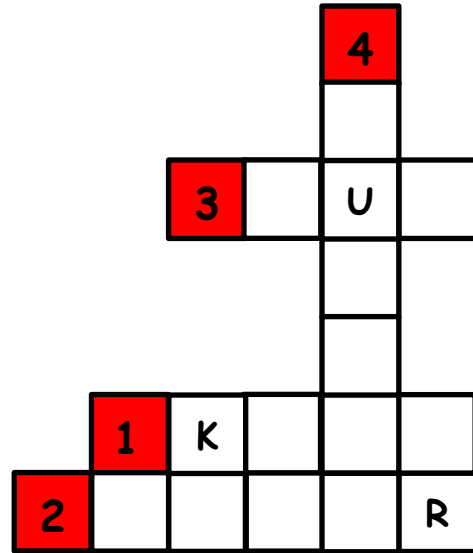
Books: Crazy English

1.



Facebook group for teachers: [ramazanceylan.elt](#)

Books: Crazy English



Ramazanceylan.eft

ANSWER KEY

1. Write the correct words under the pictures.

| | | | | | | |
|------|------|-------|-------|-------|-------|-------|
| 1. M | 2. H | 3. E | 4. I | 5. J | 6. N | 7. L |
| 8. B | 9. K | 10. D | 11. A | 12. G | 13. C | 14. F |

2. Match the sentences with their meanings.

| | | | | |
|------|------|------|------|------|
| 1. H | 2. A | 3. G | 4. C | 5. F |
| 6. B | 7. D | 8. E | | |

3. Put the sentences into correct places of conversation.

| | | | |
|------|------|------|------|
| 1. C | 2. A | 3. D | 4. B |
|------|------|------|------|

4. Write "B" for "Birds", "M" for "Mammals" and "R" for "Reptiles". (2 points each.)

| | | | | | | | |
|------|-------|-------|-------|------|------|------|------|
| 1. M | 2. B | 3. M | 4. B | 5. B | 6. M | 7. R | 8. B |
| 9. M | 10. M | 11. M | 12. R | | | | |

5. Match the words with the sentences.

| | | | | | | | | | |
|------|------|------|------|------|------|------|------|------|-------|
| 1. E | 2. J | 3. A | 4. D | 5. I | 6. C | 7. H | 8. G | 9. F | 10. B |
|------|------|------|------|------|------|------|------|------|-------|

6. Circle the correct words.

| | | | |
|--------------------------------------|------------|------------|--------------|
| A. "Love animals - Protect the life" | B. Clever | C. Harmful | D. Different |
| E. Plant trees | F. Extinct | | |

7. Guess the words and complete the puzzle.

| | | | |
|---------|----------|---------|-----------|
| 1. Kill | 2. Water | 3. Fur | 4. Jungle |
| 5. Tall | 6. Claw | 7. Stop | 8. Fish |